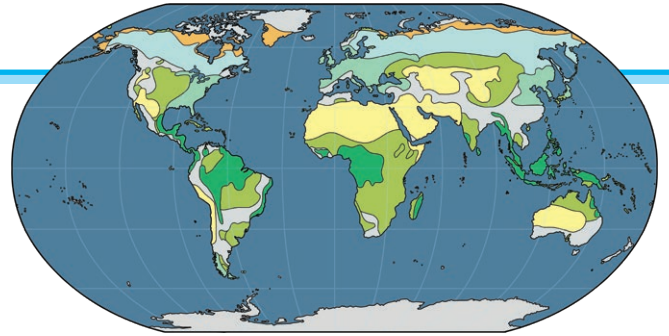


Biomes

What Are Biomes?

Biomes are naturally occurring areas on Earth which share similar landscapes and climates and are home to similar animals and plants. Other factors such as temperature, geology and soil are also considered when defining a biome. The whole world is split into different biomes.



Different Types of Biome

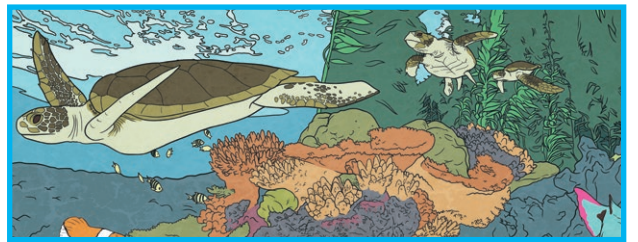
There is some disagreement on exactly how many types of biomes there are but most people think there are six.

These are:

- Aquatic
- Desert
- Forest
- Grassland
- Rainforest
- Tundra

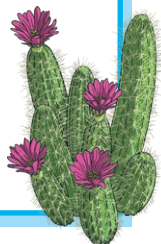
Aquatic

The aquatic biome is the largest type - it covers over 70% of Earth! This biome can be further divided into two main types: freshwater and saltwater.



Desert

Desert biomes cover around one-third of the Earth and are the driest type of biome. They can be hot or cold, depending on where on the planet they are. Plants and animals have adapted to live in these harsh conditions. Plants found in desert biomes include cacti and creosote bushes while animals that survive here include snakes and lizards.



Forest

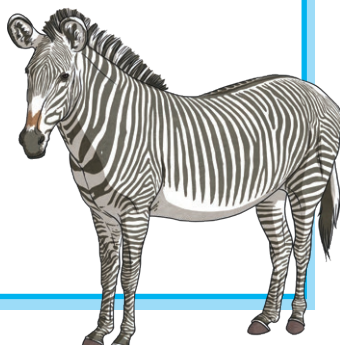
Forest biomes cover approximately 30% of the planet and are home to a wide range of trees and plants. There are three main forest biomes: temperate, tropical and taiga. Animals such as moose, deer, bears and squirrels can all be found in forest biomes.





Grassland

Grassland biomes are areas which have enough rainfall for grasses to grow but not enough for forests to develop. Farming often takes place in grassland biomes because of the rich soil. The tropical grasslands in Africa are home to giraffes, zebras and lions.



Rainforest

Sadly, this biome covers less than 6% of Earth but produces nearly 33% of all of our oxygen. This type of biome is hot and wet all year long and is home to half of all the different types of animals and plants on the planet.



Tundra

The coldest of the biomes! Due to the low temperatures and dry conditions, these biomes are home to very few plants and animals. However, mosses and short grasses still grow here and Arctic foxes and reindeer make their homes in tundra biomes. This type of biome covers one-fifth of the planet.



Did You Know...?

The plants and animals which live in each type of biome have adapted to help them survive in that biome.

